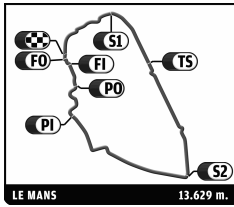




24 HEURES DU MANS 90 ANS

22-23 JUN 2013

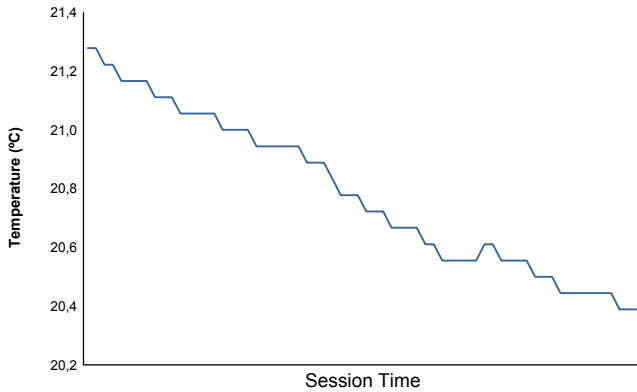


Computerised results and timing service

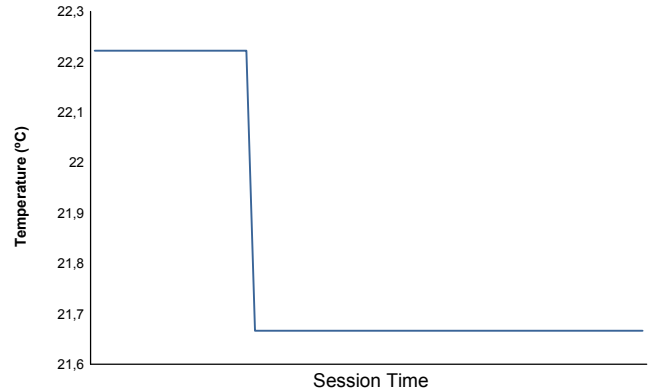
81° Edition des 24 Heures du Mans FIA WEC Qualifying Practice 1 Weather Report

Night Session

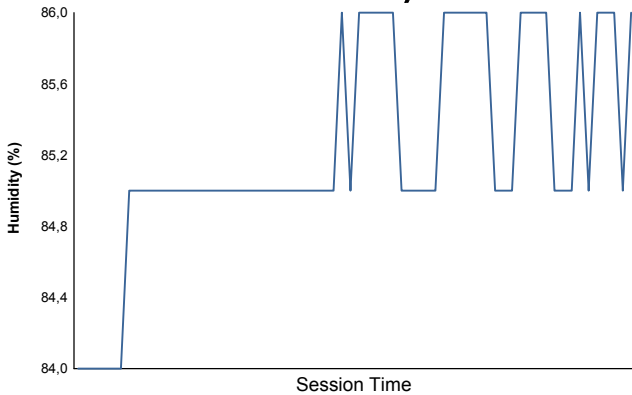
Air Temperature



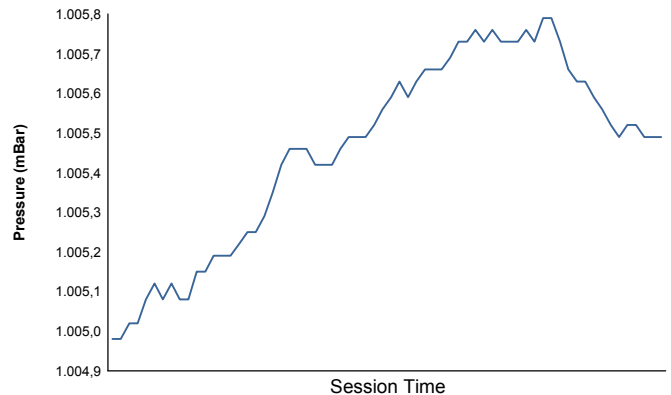
Track Temperature



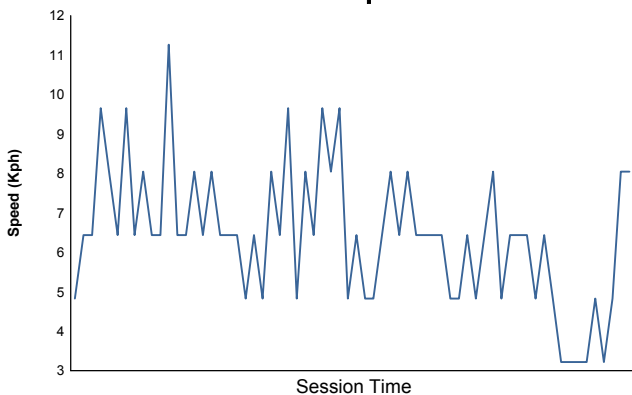
Humidity



Pressure

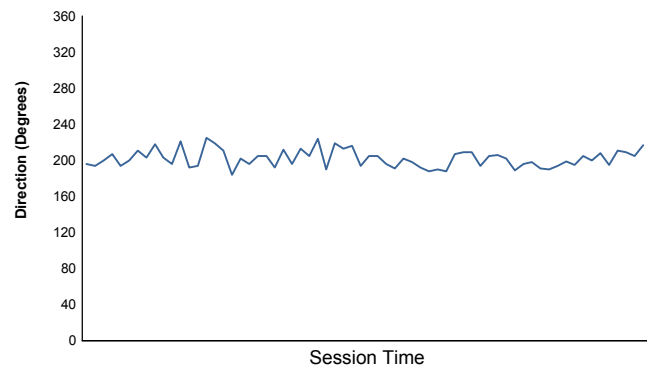


Wind Speed



Wind direction

North = 0°/360° Est = 90° South = 180° West = 270°



Track Status:

DRY