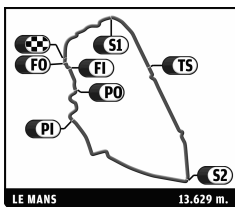




# 24 HEURES DU MANS

16-17 JUN 2012



Computerised results and timing service

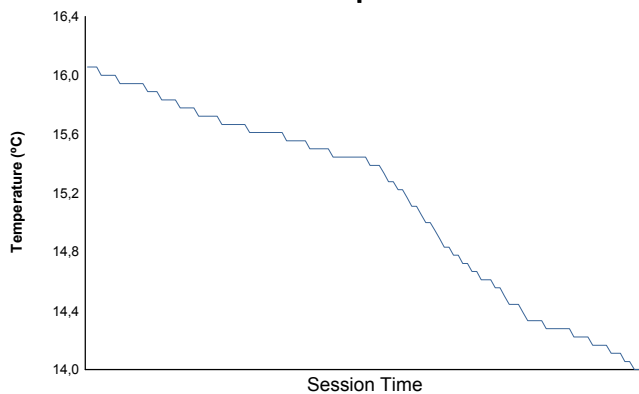
## 80° Edition des 24 Heures du Mans

FIA WEC

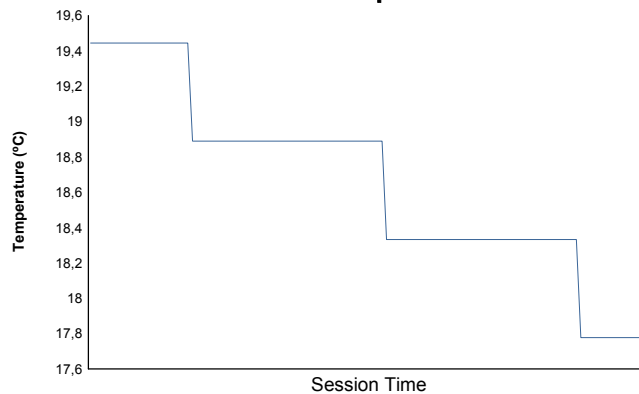
### Qualifying Practice Session 1

### Weather Report

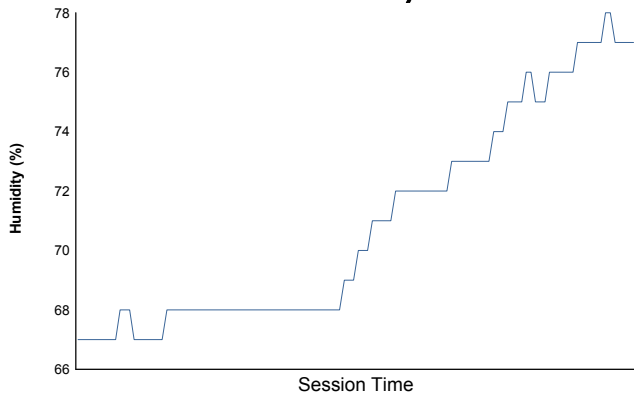
#### Air Temperature



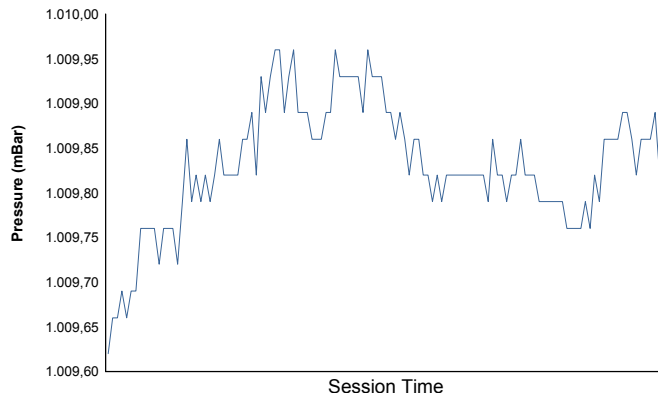
#### Track Temperature



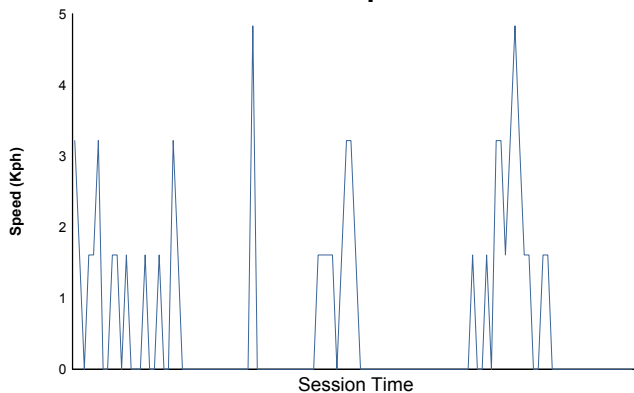
#### Humidity



#### Pressure

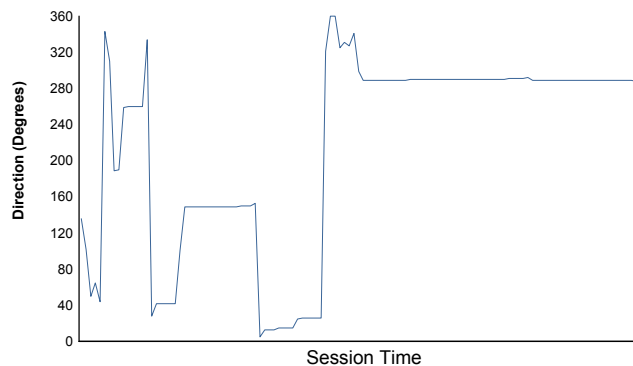


#### Wind Speed



#### Wind direction

North = 0°/360° Est = 90° South = 180° West = 270°



Track Status:

**DRY**